

# Horizon 100A

12 x 3",  
Quad-Amp Column Speaker

ENNE

## Key Feature

- Ultra-compact, column loudspeaker.
- Consists of 12 x 3" (0.75" voice coil) neodymium transducers.
- Quad-Amplifier, need independent DSP channel.
- 100° Vertical coverage.
- Variable Horizontal coverage angle, from 15° to 90°.
- DSP preset for different applications.
- Weather proof components.
- Available in black or white.

## Applications

- PA system
- Clubs & Theatres
- Public buildings
- Education
- Transportation
- Front Fill / Stage in-fill

## Description

The Horizon 100A is a quad-amp column speaker which consists of 12 x 3" (0.75" voice coil) neodymium transducers. Although it has same out looking with Vertica 100A, but the internal structure and character are total different.

Horizon 100A has 100° vertical coverage pattern. For the horizontal angle, it can be changed from 15° to 90° depends on different DSP Preset.

Horizon 100A requires 4 amplifier channels, each amplifier channel need independent DSP processing. All DSP presets are calculated with precise tuning and test. Hence, Horizon 100A is not a normal column speaker, it is an intelligent system.

Horizon 100A can be used with subwoofer together and offer better low frequency response. The cabinet is compact, modular and powerful and can offer 127dB Peak SPL.

## Specifications

Frequency Range (-10 dB)<sup>1</sup>: 150 Hz - 20 KHz

Frequency Response (±3dB)<sup>1</sup>: 180 Hz - 18 KHz

Sensitivity (1w@1m)<sup>2</sup>: 96 dB

Nominal Impedance: 8 Ohms

Peak Maximum SPL<sup>3</sup>: 127 dB @ full power

Power Rating: Quad-Amp: 100W / 200W / 400W  
(Continuous<sup>4</sup>/Program/Peak)

Coverage Pattern<sup>5</sup>(V x H): 100° x 15° to 90°

Dimension (H x W x D): 89 x 1000 x 117 mm

Net Weight: 13 Kg

HF Driver: 12 x 3" speaker with 0.75" voice coil

Input Connectors: 2 x Neutrik® Speakon® NL4MP

Enclosure Construction: 1.5 mm stainless steel  
Micro-textured epoxy paint

1. In full-space.

2. With full 12 components.

3. Calculated with sensitivity and full power rate at full 12 components, 300W RMS, 600W program, 1200W peak.

4. IEC Filtered Pink Noise with 6dB Crest Factor, 2 hours duration.

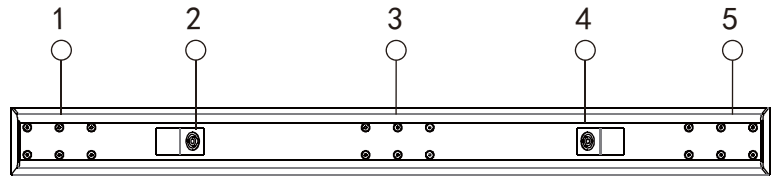
5. 500Hz to 4kHz.

# Horizon 100A

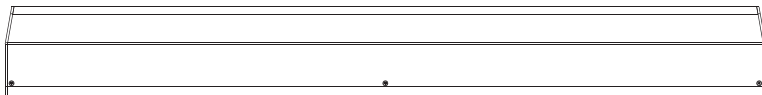
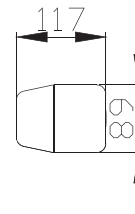
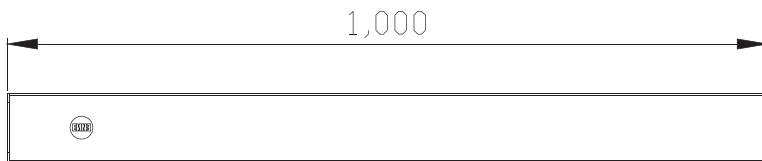
12 x 3", Quad-Amp Column Speaker

## Back Panel Instructions

1. Installation kit fixing points
2. Input Speakon Loop thru: +1/-1, +2/-2
3. Wall bracket fixing points
4. Input Speakon Loop thru: +3/-3, +4/-4
5. Installation kit fixing points



## Dimension



ENNE Inc. (USA)  
650 N San Mateo Drive. San Mateo, California, USA  
CA 94401

ENNE Inc. (HK)  
香港九龍彌敦道345號宏利公積金大廈10樓1001-1003室  
Tel (852) 2301 1130  
Fax (852) 2301 1299

ENNE Inc. (CN)  
廣州市番禺區鐘村鎮鐘一村高沙工業區自編3號  
Tel (020) 8386 3535 8386 3598  
Fax (020) 8386 3550

